

**SERVICE FACTOR**

Load	Driven Equipment	Prime Mover Motor or Hydraulic Reciproca Turbine Drive Ting Engine		
Uniform	Centrifugal Pumps, Conveyors uniform loading, Exciters, Fans and Blowers, Light Duty Generators—uniform loading, Mixers—liquid.	1.00	1.10	1.25
Light Shock	Centrifugal Pumps, Generators, Pulsating Grinders, Hydraulic Pumps, kilns, Line Crafting Machine tools, Oscillating Pumps, Textile Machinery, Woodworking Machinery.	1.25	1.50	1.85
Medium Shock	Air Compressors Multy—Cylinder, Ball and Rod Mills, Cranes, Elevators and Hosists Punch, Presses, Reciprocating Pumps, Shares Ship Drives, Welding Generators.	1.75	2.00	2.35
Heavy Shock	Air Compressors Single-Cylinder, Dredgers, Drilling Rings, Mining Machinery, Rolling Mill Drives, Rubber Mixers.	2.25	2.50	2.80
Extreme Shock	Ore Crushers, Barstock Shears Conveyors Vibrating.	2.75	3.25	3.75

**BOSOFLEX TYRE COUPLING**

Details required for coupling selection are:

Power rating and speed of the driven machine

Type of drive and machine

Diameter of shaft to be connected

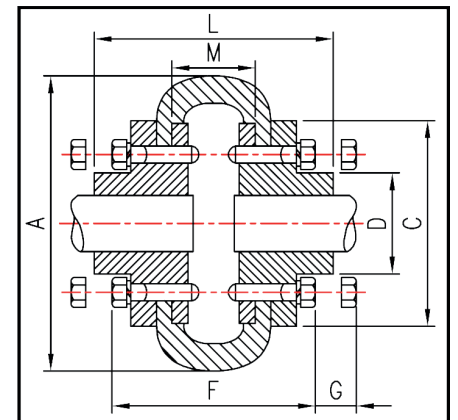
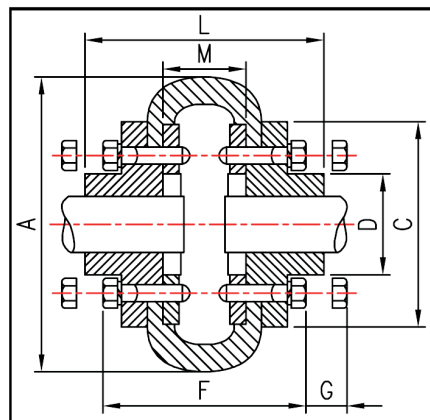
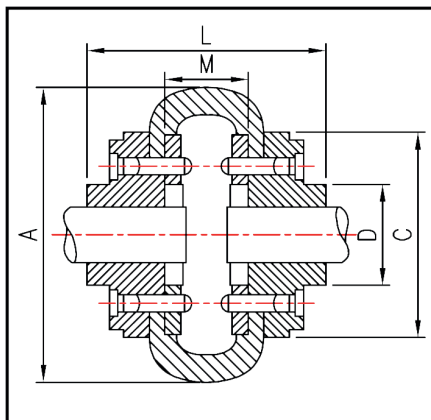
**SELECTION EXAMPLE**

A 9.32 KW Electric Motor at 1440 rpm coupled to a Centrifugal pumps subject to uniform load. Maximum shaft o/d—42mm.

To Select a Coupling:

$$\text{Rating of Coupling} = \frac{\text{KW}}{\text{RPM}} \times 100 = \frac{9.32 \times 1 (\text{SF}) \times 100}{1440} = 0.65 \text{ KW/100RPM}$$

Recommended Coupling Size – BF = 60



Size	Power Per 100rev/min. Kw	Max. Speed Rev/min.	Bore		A mm	L mm	D mm	E mm	C mm	G mm	M+ mm	F mm	Approx Wts. (Kgs.)
			Min. mm	Max. mm									
BF-40	0.22	4500	13	30	104	66	—	22	82	43	22	—	1.6
BF-45	0.39	4500	13	32	120	74	—	25	94	43	24	—	2.0
BF-50	0.56	4500	18	38	133	89	79	32	100	43	25	—	2.4
BF-60	1.11	4000	18	48	165	109	73	38	125	43	33	—	4.0
BF-70	1.70	3600	20	55	197	130	82	45	144	10	40	101	6.2
BF-80	2.65	3100	26	65	211	145	95	51	167	10	43	106	9.6
BF-85	3.20	3000	32	70	222	150	103	53	179	13	44	107	11.5
BF-90	3.82	2880	32	76	235	160	110	57	188	13	46	119	14.0
BF-100	5.29	2600	32	85	254	168	124	60	216	13	48	123	20.0
BF-110	7.46	2300	32	90	279	174	134	65	133	14	44	127	26.0
BF-120	12.40	2050	39	102	314	201	152	76	264	14	49	140	32.0
BF-140	19.70	1800	76	120	359	211	195	89	311	14	24	152	54.0
BF-160	32.6	1600	75	140	402	234	216	102	345	19	30	156	82.0
BF-180	57.4	1500	75	175	470	274	266	114	398	19	46	188	126.0

**BOSON ENGINEERING PVT LTD.**

BRITISH TECHNOLOGY AT ITS BEST

CONTACT US:

Corporate Office : 22 Richard Court, Stanley Road  
London W3 8FT, London, UK

India Office : BC – 121, Sector – I, Saltlake,  
Kolkata – 700 064

Mobile : +91 98302 26444

Fax : 0044 (0)20 7193 7286

E-mail : sales@bosonengineers.co.in

Website: www.bosonengineers.co.in